

LawnMaster

BRUSH CUTTER

LawnMaster



Cordless Brush Cutter 58V lithium



RECYCLING AND DISPOSING

When you decide to get rid of the machine, make sure to follow the local regulation. The batteries used in this mower's battery pack contain the following toxic and corrosive material: LITHIUM-ION.



WARNING

Toxic materials must be disposed of in a specified manner in order to prevent contamination of the environment. Before disposing of damaged or worn out Lithium-Ion battery packs, contact your local waste disposal agency for information and specific instructions. Take the battery to a local recycling and/or disposal centre that is certified for disposal. If the battery pack cracks or breaks, whether it leaks or not, do not recharge it and do not use it. Dispose of it and replace it with a new battery pack. **DO NOT ATTEMPT TO REPAIR IT!**

Follow these instructions in order to avoid injury and the risk of fire, explosion, or electric shock, and to avoid damage to the environment:

- Cover the battery's terminals with heavy-duty adhesive tape.
- Do not attempt to remove or destroy any of the components of the battery pack.
- Do not attempt to open the battery pack.
- If a leak develops, the electrolytes that are released are corrosive and toxic. Do not get the solution in the eyes or on the skin, and do not swallow it.
- Do not place batteries in regular household trash.
- DO NOT incinerate batteries.
- DO NOT place batteries where they will become part of any waste landfill or municipal solid waste stream.
- Dispose of batteries at a certified recycling or disposal center.

Package materials are recyclables. Please, throw them away on the appropriate trash can.

GUARANTEE

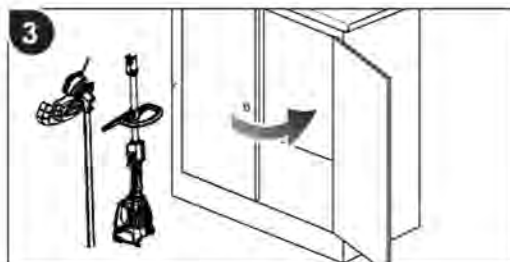
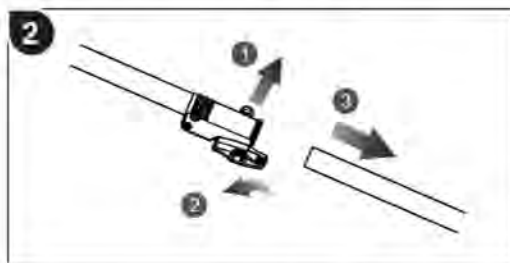
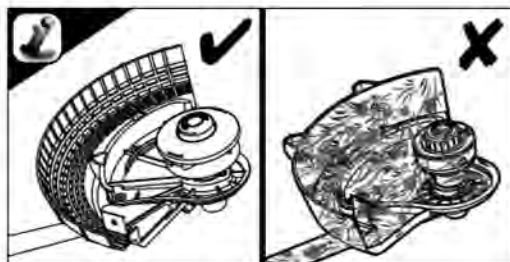
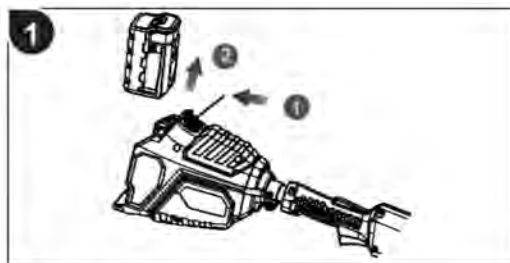
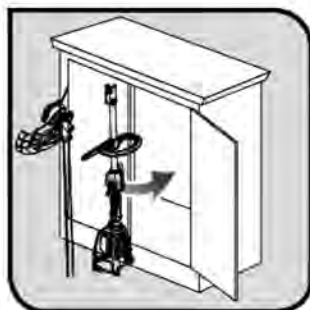
This product has a 3 years guarantee. This guarantee covers damages and bad function, only if the product has not been misused and all the instructions has been correctly followed.

In order to prove guarantee a receipt must be presented. The product has to be complete and have all its parts.

The guarantee do not cover wear, lack of maintenance, negligence, incorrect assembly and inappropriate usage (blows, disrespect to power supply, storage, using conditions, etc).

Warranty is void if it has been adapted and or modified in anyway.

STORAGE CORDLESS BRUSHCUTTER AND LAWN TRIMMER



INDEX

INTRODUCTION	4
SAFETY RULES AND PRECAUTIONS	4
SAFE OPERATING PRACTICES	5
WORK AREA SAFETY	6
ELECTRICAL SAFETY	6
PERSONAL SAFETY	6
GENERAL SAFETY RULES	7
RESIDUAL RISK	7
RISK REDUCTION	8
WARNING SYMBOLS	9
PRODUCT DESCRIPTION	11
DETAILED DESCRIPTION OF THE PRODUCT	11
TECHNICAL DATA	12
VIBRATION LEVEL	13
ASSEMBLY	13
UNPACKING	13
PACKING LIST	14
GETTING STARTED	15
USING THE PRODUCT	18
CORDLESS BRUSHCUTTER AND LAWN TRIMMER	18
BATTERY AND CHARGER	25
MAINTENANCE	26
TRANSPORTATION AND STORAGE	29
TRANSPORTING LITHIUM BATTERIES	29
STORAGE LITHIUM BATTERIES	29
STORAGE CORDLESS BRUSHCUTTER AND LAWN TRIMMER	30
RECYCLING AND DISPOSING	31
GUARANTEE	31

INTRODUCTION

Thank you for choosing this LawnMaster product. We are sure you shall appreciate the quality and performance of this machine, which will facilitate your task for a long period of time.

Remember that you can contact our Technical Support for any queries regarding assembly and maintenance, as well as for the resolution to any problems that may arise, and for the purchase of spare parts and/or accessories.



WARNING

Please read these Operating Instructions carefully as well as the safety precautions before using your device. Failure to do so could result in an electric fault, fire hazard and/or in personal injury. The manufacturer will not take responsibility for accidents or injuries caused to the user, third parties or objects as a result for not following the instructions in the user manual.



WARNING

Only use this brush cutter to cut grass and small shrubs. Any other use could be dangerous and is at your own risk. Do not use this brush cutter for other unintended purposes. For example: Do not use the brush cutter to cut wood logs, plastic materials, bricks or building materials. The use of this brush cutter for operations other than those provided may lead to dangerous situations.

This machine is not intended for professional use.

Keep this user manual safe for future reference. Should you sell this machine in the future, please remember to hand it to the new owner.

SAFETY RULES AND PRECAUTIONS

The aim of the following warning signs and their meaning is to explain the levels of risk related to this product.

SYMBOL	SIGN	MEANING
	WARNING	It indicates a dangerous situation where you need to pay full attention to avoid any kind of personal injuries or damage to the device.
	NOTICE	It indicates useful information which can facilitate your task.



WARNING

Please read all safety warnings and instructions. Not doing so may result in electrical shocks, fire, or in severe personal injuries.

TRANSPORTATION AND STORAGE

- Stop the machine and allow it to cool before storing or transporting. Do not store or transport the machine with batteries fitted, remove and secure separately
- Clean all foreign material from the product. Store it in a cool dry and well-ventilated place that is inaccessible to children. Keep away from corrosive agents such as garden chemicals and de-icing salts. Do not store outdoors.
- Cover the blade with the blade protector before storing the unit, or during transportation.
- For transportation, secure the machine against movement or falling to prevent injury to persons or damage to the machine.

TRANSPORTING LITHIUM BATTERIES

Transport the battery in accordance with local and national provisions and regulations.

Follow all special requirements on packaging and labelling when transporting batteries by a third party. Ensure that no batteries can come in contact with other batteries or conductive materials while in transport by protecting exposed connectors with insulating, non-conductive caps or tape. Do not transport batteries that are cracked or leaking. Check with the forwarding company for further advice.



WARNING

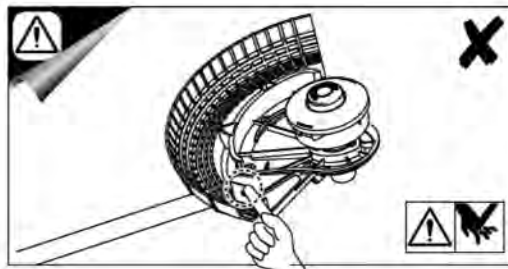
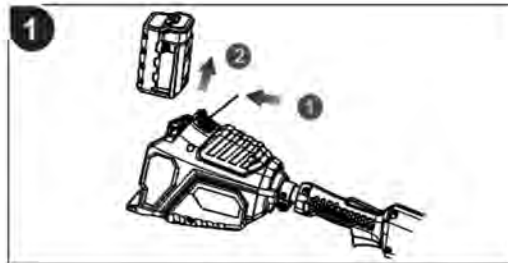
Not intended for use other than what's listed above.

STORAGE LITHIUM BATTERIES

Store and charge your batteries below in a cool area. Temperatures above or below normal room temperature will shorten battery pack life.

Never store batteries in a discharged condition. Wait for battery pack to cool and fully charge immediately. Store the battery pack where the temperature is below 27°C, and away from moisture.

All batteries gradually lose their charge. The higher the temperature, the quicker they lose their charge. If you store your unit for long periods of time without using it, recharge the batteries every month or two. This practice will prolong battery pack life.



SAFE OPERATING PRACTICES

TRAINING

- Read the instructions carefully. Be familiar with the controls and the correct use of the machine.
- Never allow children, persons with reduced physical, sensory or mental capabilities or lack of experience and knowledge or people unfamiliar with these instructions to use the machine, local regulations may restrict the age of the operator.
- Keep in mind that the operator or user is responsible for accidents or hazards occurring to other people or their property.

PREPARATION

- Before use, always visually inspect the machine for damaged, missing or misplaced guards or shields.
- Never operate the machine while people, especially children, or pets are nearby.

OPERATION

- Wear eye protection, long trousers and stout shoes at all times while operating the machine.
- Avoid using the machine in bad weather conditions especially when there is a risk of lightning.
- Use the machine only in daylight or good artificial light.
- Never operate the machine with damaged guards or shields or without guards or shields in place.
- Switch on the motor only when the hands and feet are away from the cutting means.
- Always disconnect the machine from the battery pack
 - a) whenever the machine is left unattended;
 - b) before clearing a blockage;
 - c) before checking, cleaning or working on the machine;
 - d) after striking a foreign object;
 - e) whenever the machine starts vibrating abnormally.
- Take care against injury to feet and hands from the cutting means.
- Always ensure that the ventilation openings are kept clear of debris.
- Never use saw blade.
- Always be sure of your footing on slopes.
- Walk, never run.
- Not overreach and keep the balance at all times.
- Do not touch moving hazardous parts before the machine is disconnected from the mains and the moving hazardous parts have come to a complete stop.

MAINTENANCE AND STORAGE

- Disconnect the machine from the battery pack before carrying out maintenance or cleaning work.
- Use only the manufacturer's recommended replacement parts and accessories.
- Inspect and maintain the machine regularly. Have the machine repaired only by an authorized repairer.
- When not in use, store the machine out of the reach of children.

WORK AREA SAFETY

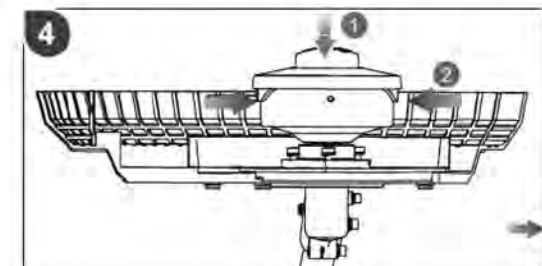
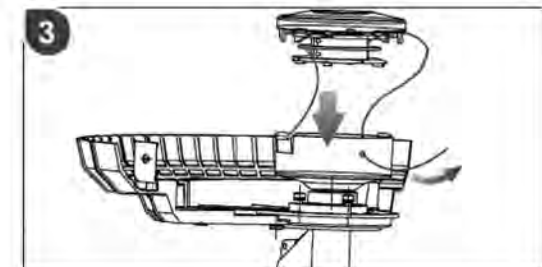
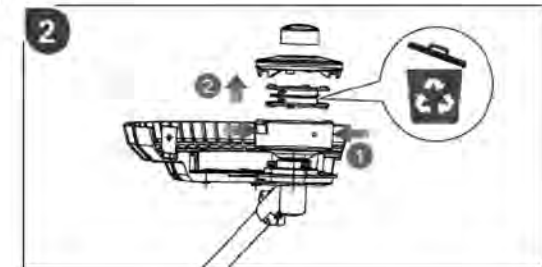
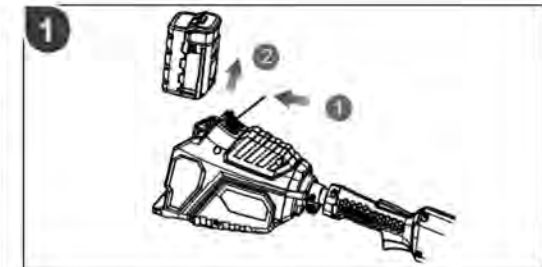
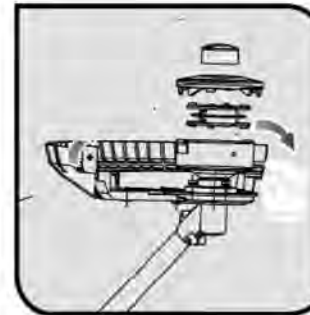
- Keep work area clean and well lit. Cluttered or dark areas invite accidents.
- Do not operate power tools in explosive which may ignite the dust or fumes atmospheres, such as in the presence of flammable liquids, gases or dust.
- Power tools create sparks which may ignite the dust or fumes
- Keep children and bystanders away while operating control. a power tool. Distractions can cause you to lose control.

ELECTRICAL SAFETY

- Power tool plugs must match the outlet. Never modify the plug in any way. Do not use any adapter plugs, with earthed (grounded), power tools. Unmodified plugs and matching outlet will reduce risk of electric shock.
- Avoid body contact with earthed or grounded surfaces, such as pipes, radiators, ranges and refrigerators. There is an increased risk of electric shock if your body is earthed or grounded.
- Do not expose power tools to rain or wet conditions, Water entering a power tool will increase the risk of electric shock.
- Do not abuse the cord. Never use the cord for carrying, pulling or unplugging the power tool. carrying, pulling or unplugging the power tool.
- Keep cord away from heat, oil, sharp edges or moving parts. Damaged or entangled cords increase the risk of electric shock.
- When operating a power tool outdoors, use an extension cord suitable for outdoor use. Use of a cord suitable for outdoor use reduces the risk of electric shock.
- If operating a power tool in a damp location is, unavoidable, use a residual current device (RCD) protected supply. Use of an RCD reduces the risk of electric shock

PERSONAL SAFETY

- Stay alert, watch what you are doing and use common sense when operating a power tool. Do not use a power tool while you are tired or under the influence of drugs, alcohol or medication. A moment. of inattention while operating power tools may result in serious personal injury
- Use personal protective equipment. Always wear eye protection. Protective equipment such as dust mask, non-skid safety shoes, hard hat, or hearing protection used for appropriate conditions will reduce personal injuries.
- Prevent unintentional starting. Ensure the switch is in the off-position before connecting to power source and/or battery pack, picking up or carrying the tool. Carrying power tools with your finger on the switch or energising power tools that have the switch, on invites accidents
- Remove any adjusting key or wrench before turning the power tool on. A wrench or a key left attached to a rotating part of the power tool may result in personal injury.
- Do not overreach. Keep proper footing and balance at all times. This enables better control of the power tool in unexpected situations.
- If devices are provided for the connection of dust extraction and collection facilities, ensure these are connected and properly used. Use of dust collection can reduce dust-related hazards.



MAINTENANCE



WARNING

Use only original manufacturer's replacement parts, accessories and attachments. Failure to do so can cause possible injury, poor performance and may void your warranty.



WARNING

Servicing requires extreme care and knowledge and should be performed only by a qualified service technician. For service we suggest you return the product to your nearest authorized service center for repair. When servicing, use only identical replacement parts.

- You may make adjustments and repairs described here. For other repairs, contact the authorized service agent.
- Before any maintenance or adjustment, disable the machine by removing the power source.
- After extending new cutter line or cleaning, checking the blade, always return the product to its normal operating position before starting.
- After each use, clean the product with a soft dry cloth.
- Check all nuts, bolts and screws at frequent intervals for proper tightness to ensure the product is in safe working condition. Any part that is damaged should be properly repaired or replaced by an authorized service centre.

GENERAL SAFETY RULES

- Do not attempt to touch or stop the blade when it is rotating.
- A moving blade can cause severe injury. Maintain proper control of the machine with both hands until the blade has completely stopped rotating.
- Replace any blade that has been damaged. Always make sure blade is installed correctly and securely fastened before each use.
- Use only the manufacturer's replacement LawnMaster blade. Do not use any other cutting attachment.
- Never cut any material over 13mm diameter.
- Your Brushcutter is fitted with a harness. Carefully adjust the harness to fit comfortably and help to support the weight of the machine at your right side.
- Identify the Quick Release mechanism and practice using it BEFORE you start using the machine. It's correct use may prevent serious injury in the case of an emergency. Never wear additional clothing over the harness or otherwise restrict access to the quick release mechanism.
- Cover the blade with the blade protector before storing the unit, or during transportation. Always remove the blade protector before using the unit. If not removed, the blade protector could become a thrown object as the blade begins to turn.
- Exercise extreme caution when using the blade with this unit. Blade thrust is the reaction that may occur when the spinning blade contacts anything it cannot cut. This contact may cause the blade to stop for an instant, and suddenly "thrust" the unit away from the object that was hit. This reaction can be violent enough to cause the operator to lose control of the unit. Blade thrust may occur without warning if the blade snags, stalls, or binds. This is more likely to occur in areas there it is difficult to see the material being cut.
- For cutting ease and safety, approach the weeds being cut from the right to the left. In the event an unexpected object or woody stock is encountered, this practice could minimize the blade thrust reaction. Both hands must be used at all times to control this product.



WARNING

Some regions have regulations that restrict the use of the product. Check with your local authority for advice.

RESIDUAL RISK

Even when the product is used as prescribed, it is still impossible to completely eliminate certain residual risk factors. The following hazards may arise in use and the operator should pay special attention to avoid the following:

- Injury caused by vibration. Always use the right tool for the job, use designated handles and restrict working time and exposure.
- Exposure to noise can cause hearing injury. Wear ear protection and limit exposure
- Kickback can occur when using the brushcutter. Ensure proper control by using both hands on the designated handles. Read and follow the directions elsewhere in this manual to help reduce the risk of kickback.

RISK REDUCTION

It has been reported that vibrations from hand-held tools may contribute to a condition called Raynaud's Syndrome in certain individuals. Symptoms may include tingling, upon exposure to cold. Hereditary factors, exposure to cold and dampness, diet, smoking and work practices are all thought to contribute to the development of these symptoms. There are measures that can be taken by the operator to possibly reduce the effects of vibration:

- Keep your body warm in cold weather. When operating the unit wear gloves to keep the hands and wrists warm. It is reported that cold weather is a major factor contributing to Raynaud's Syndrome.
- After each period of operation, exercise to increase blood circulation.
- Take frequent work breaks. Limit the amount of exposure per day.

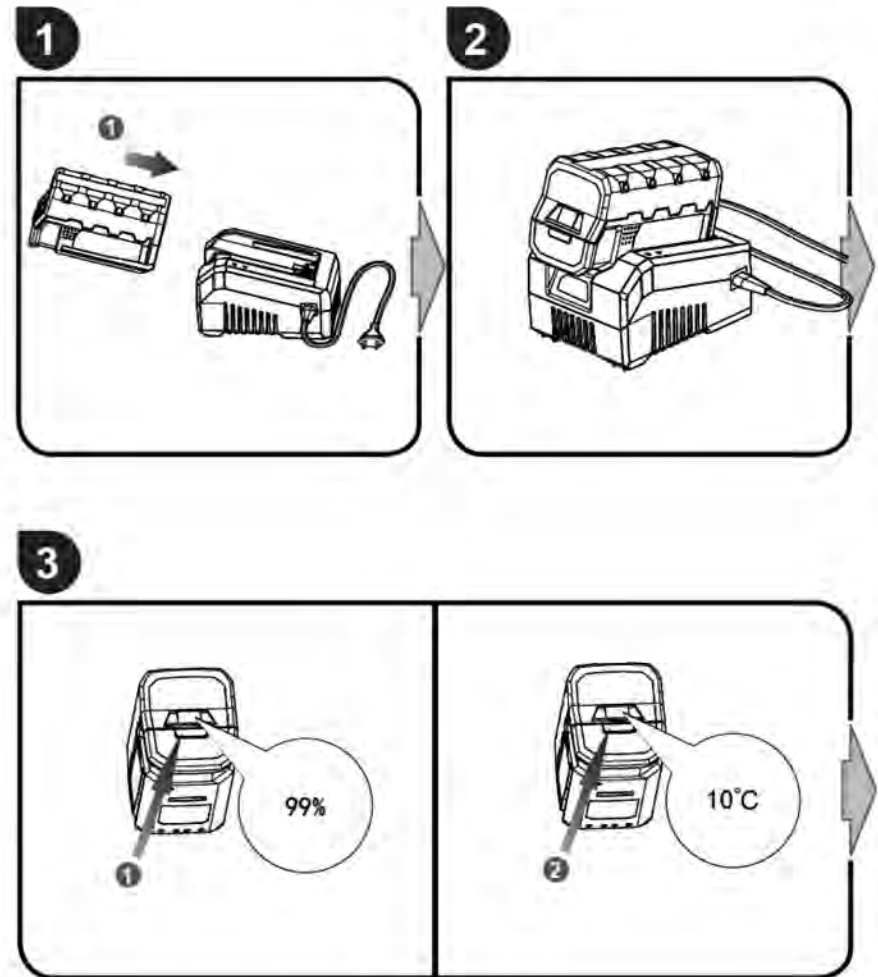
If you experience any of the symptoms of this condition, immediately discontinue use and see your doctor about these symptoms.

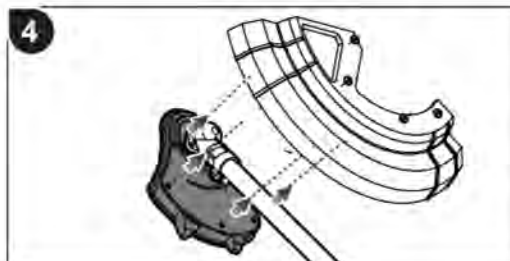
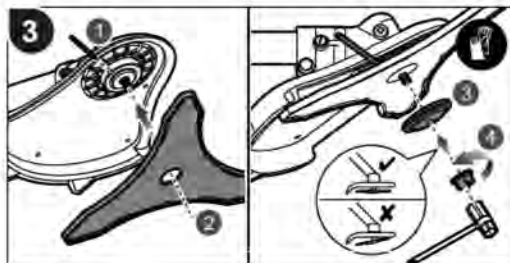
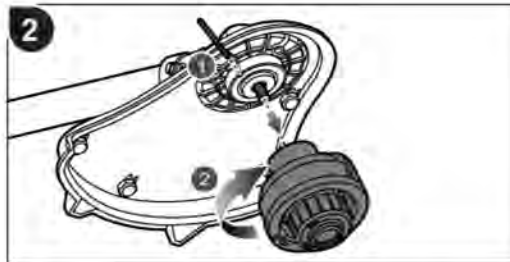
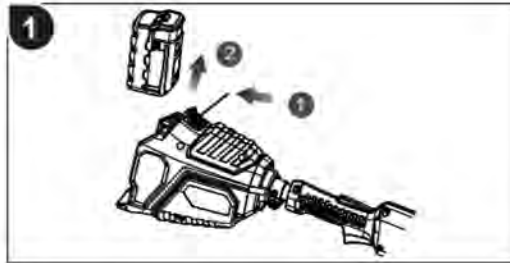


WARNING

Injuries may be caused, or aggravated, by prolonged use of a tool. When using any tool for prolonged periods, ensure you take regular breaks.

BATTERY AND CHARGER





WARNING SYMBOLS

The warning icons on labels in this machine and/or in the manual indicate the necessary information for the safe use of the device.

-  Safety alert
-  Read and understand all instructions before operating the product, follow all warnings and safety instructions.
-  Wear eye, ear and head protection.
-  Wear non-slip safety footwear when using the product.
-  Wear non-slip, heavy duty gloves.
-  Do not expose to rain or damp condition.
-  This unit is not intended for use with a toothed saw type blade.
-  Rotational direction and maximum speed of the shaft for the cutting attachment.
-  Beware of thrown or flying objects. Keep all bystanders a safe distance away from the product.
-  Beware of thrown or flying objects. Keep all bystanders, especially children and pets, at least 15m away from the operating area.
-  Keep hands away from blades.
-  Beware of blade thrust
-  3T blade is appropriate for this unit and is suited for cutting pulpy weeds and vine.



Pull: Quick release tab.



Waste electrical products should not be disposed of with household waste. Please recycle where facilities exist. Check with your local authority or retailer for recycling advice.



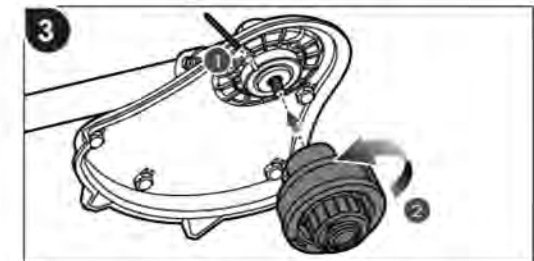
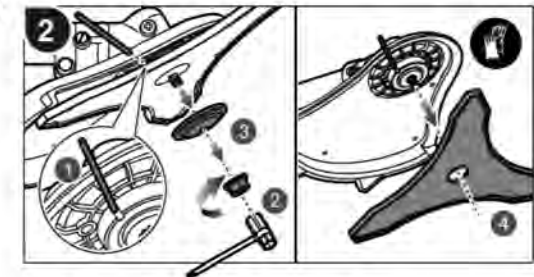
Conforms to all regulatory standards in the country in the EU where the product is purchased.

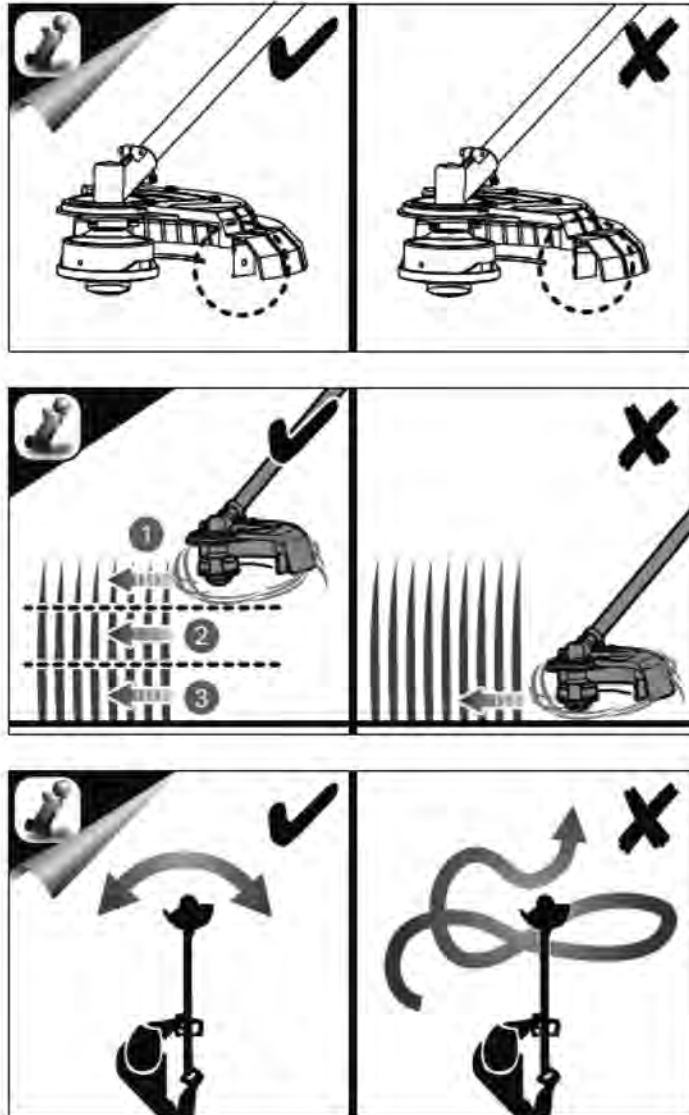


The guaranteed sound power level is shown on this label by 96 dB for Brushcutter.



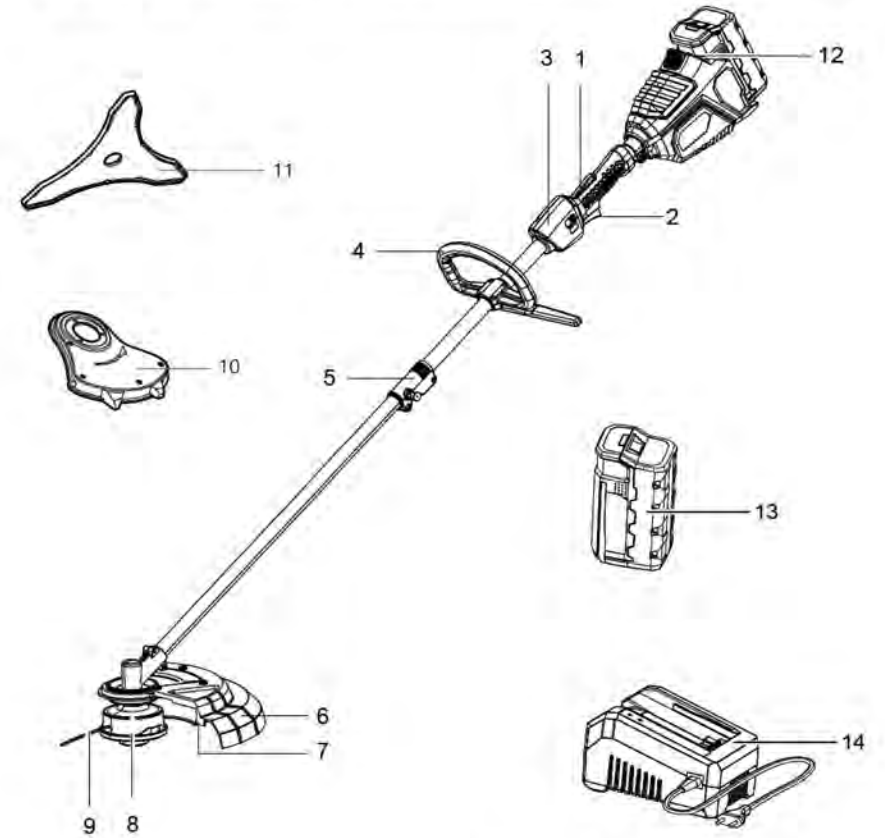
The guaranteed sound power level is shown on this label by 96 dB for Lawn Trimmer.





PRODUCT DESCRIPTION

DETAILED DESCRIPTION OF THE PRODUCT



1. Lock level
2. Trigger
3. Handle
4. P Handle
5. Connector assy
6. Cutter guard
7. Blade

8. String assy
9. Cutting line
10. Cutter guard
11. Blade
12. Button
13. Battery pack
14. Charger

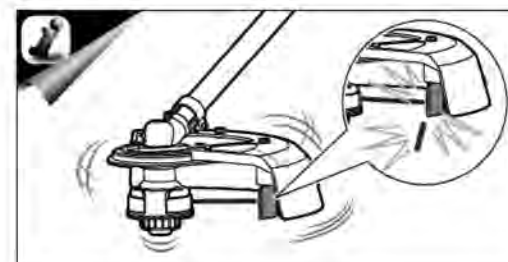
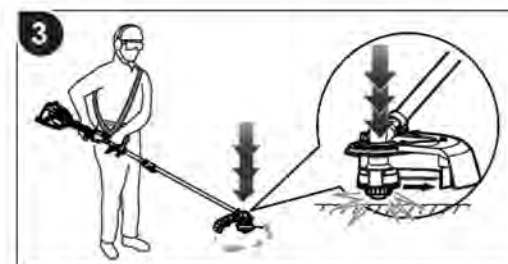
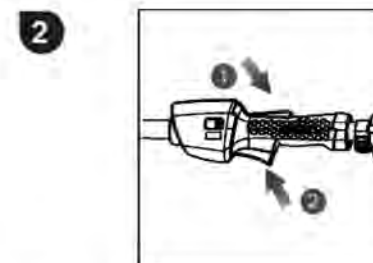
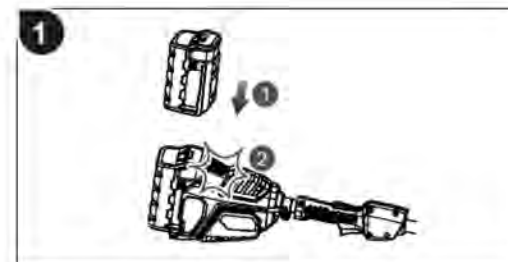
TECHNICAL DATA

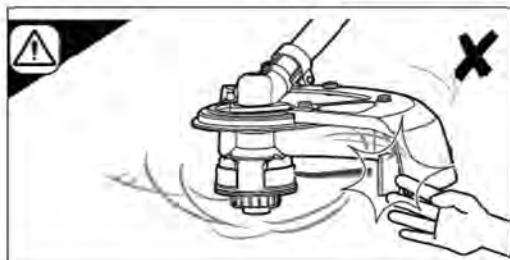
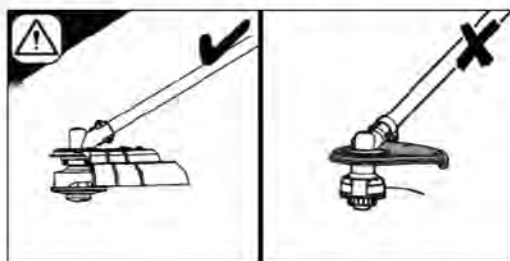
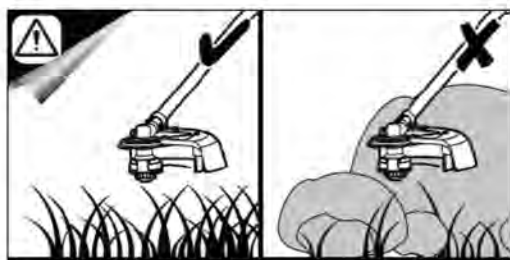
CORDLESS BRUSH CUTTER	
Model	LB050002
Battery type	58 V DC Lithium-ion
No-load speed Brush cutter	6500 rpm
No-load speed Lawn trimmer	6000 rpm
Cutting line diameter	2.0 mm
Cutting capacity Brush cutter	260 mm
Cutting capacity Lawn trimmer	380 mm
Recommended torque for blade retention	>11 N.m
Recommended torque for string head retention	>6 N.m
Vibration level Brush cutter	<3.0 m/s ²
Vibration level Lawn trimmer	<3.5 m/s ²
Uncertainty of measurement	1.5 m/s ²
L _{pa} (sound pressure)	82 dB(A)
Uncertainty of measurement (K)	2.5 dB
L _{wa} (sound power)	96 dB(A)
Uncertainty of measurement (K)	2.5 dB
Weight without battery pack Brush cutter	4.02 kg
Weight without battery pack Lawn trimmer	4.1 kg

BATTERY AND CHARGER

Battery Pack	BAT58V-2AH
Weight	0,98 Kg
Charger	CHAR-50HZ
Weight	0,87 Kg
Compatible Battery Pack	BAT58V-2AH, BAT58V-4AH

NOTE: LawnMaster reserves the right to modify the specifications of the device without prior notice.





VIBRATION LEVEL

WARNING

- The declared vibration value has been measured with a standard test method and may be used to compare one tool with another.
- The declared vibration value may be used in a preliminary assessment of exposure.
- The vibration emission during actual use of power tool can differ from the declared total value depending on the ways in which the tool is used.
- Identify safety measures to protect yourself based on an estimation of exposure in the actual conditions of use, taking account of all parts of the operating cycle such as the times when the tool is switched off and when it is running idle in addition to the trigger time.

ASSEMBLY

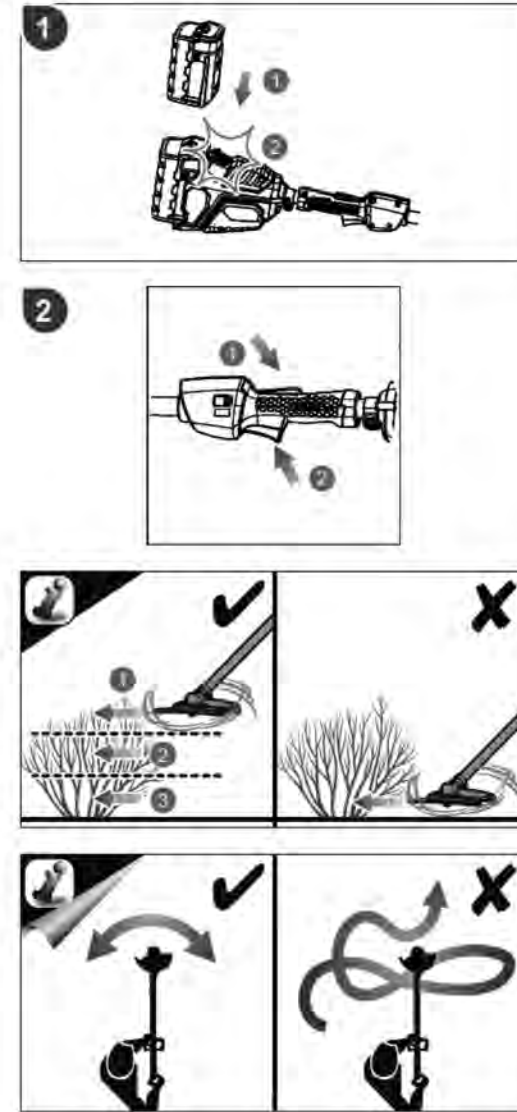
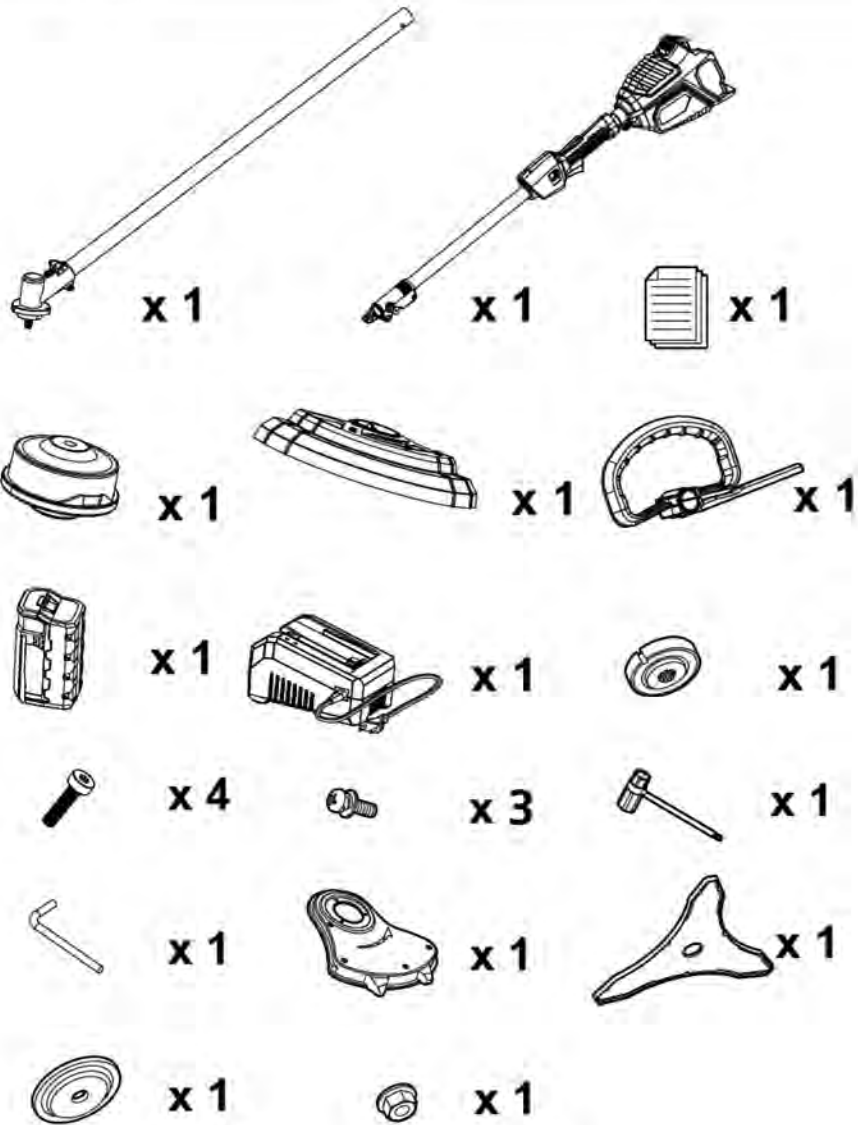
UNPACKING

- Carefully remove the product and any accessories from the box. Make sure that all items listed in the packing list are included.
- Inspect the product carefully to make sure no breakage or damage occurred during shipping.
- Do not discard the packing material until you have carefully inspected and satisfactorily operated the product.
- If any parts are damaged or missing, please call dealer for assistance.

WARNING

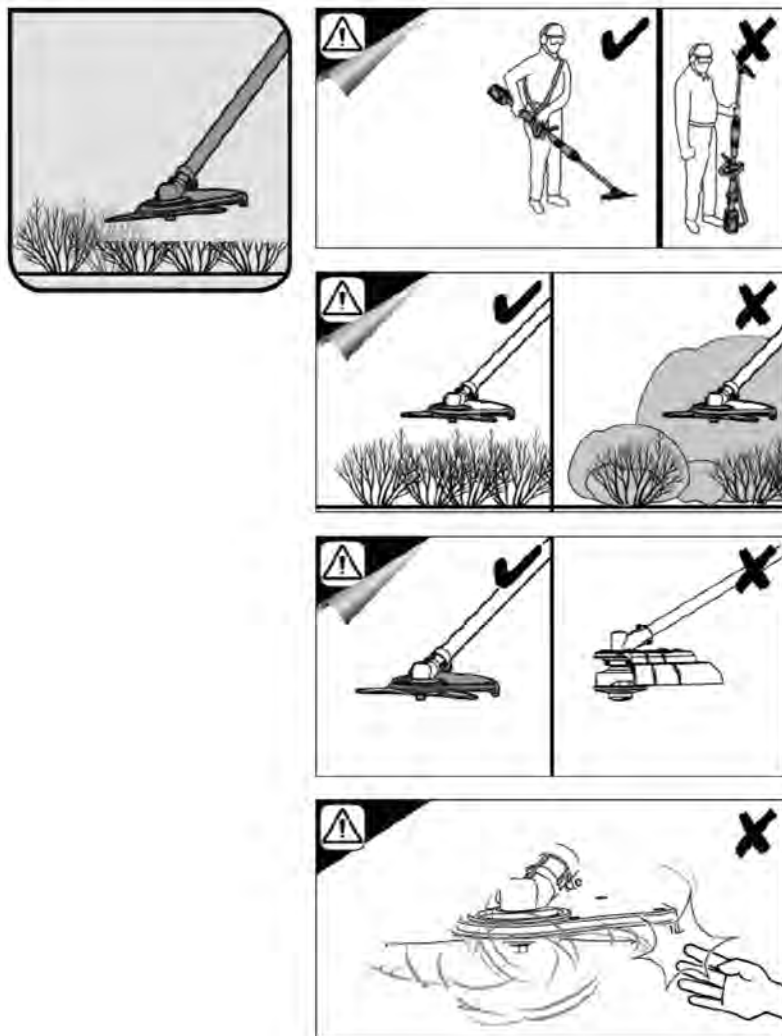
- If any parts are damaged or missing do not operate this product until the parts are replaced. Using a product with damaged or missing parts could result in serious personal injury.
- Do not attempt to modify this product or create accessories not recommended for use with this product. Any such alteration or modification is misuse and could result in a hazardous condition leading to possible serious personal injury.
- Do not insert battery until assembly is complete and you are ready to mow. Failure to comply could result in accidental starting and possible serious personal injury.
- To prevent accidental starting that could cause serious personal injury, always remove the battery from the product when assembling parts.

PACKING LIST



USING THE PRODUCT

CORDLESS BRUSHCUTTER AND LAWN TRIMMER



GETTING STARTED

