



HOSHIZAKI

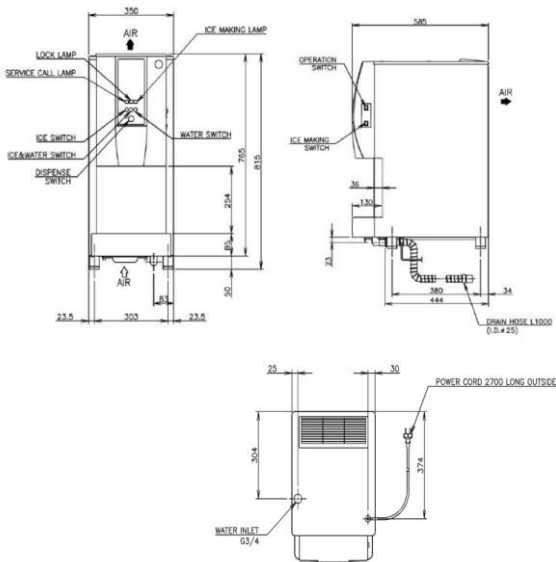
DCM-120KE

Ice and water dispenser

PRODUCT FEATURES

- Premium Cubelet ice
- Smooth ice dispense
- No ice bridging
- Robust and reliable
- Sanitary self-service application
- Easy operation – Push button; dispense ice directly in to container greatly reducing risk of contamination
- Dispenses ice only, water only or ice and water
- Adjustable portion controlled dispensing
- Due to Auger system water consumption is equal to ice production.
- 2 year parts & labour on entire unit, 5 year (parts only) on compressor & air cooled condenser coil

TECHNICAL DRAWING



PRODUCT SPECIFICATION

Production Capacity / 24hrs	Approx. 105kg @ 21°C Air temp; 15°C Water Approx. 85kg @ 32°C Air temp; 21°C Water
Max Storage Capacity	4kg
Dimensions	350mm (W) x 585mm (D) x 815mm (H)
Cooling	Air
Weight Net/Gross (kg)	107/114
Refrigerant Charge	R134a
AC Supply Voltage	1 PHASE 220-240V 50Hz/ 10 AMP Plug
Amperage	Running: 2.8A Starting: 12.6A
Operating Conditions:	
Ambient Temp	5-40°C
Water Supply Temp	5-35°C
Water Supply Pressure	0.07-0.8MPa
Voltage Range	±6%



For free 6 month extended warranty, register online within 4 weeks of purchase date. hoshizaki.com.au



INSTALLATION REQUIREMENTS

- Ensure the condenser is cleaned periodically as per the manufacturer's manual.
- Do not plug the unit into multi-plug power boards with other appliances
- Room ventilation or air conditioning can improve the situation by reducing the humidity.
- Hoshizaki recommends the use of a compatible water filter to prevent non-warrantable scale & sediment complications.

*Refer to manual for full installation & maintenance requirements.