



HOSHIZAKI

KMD-270AB

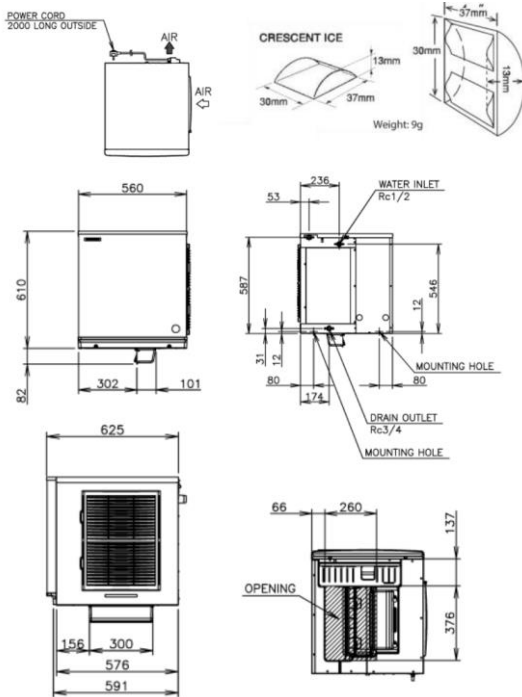
Crescent 275kg Ice Maker - Modular

PRODUCT FEATURES

- Individually shaped crescent ice.
- Protected by HoshiGuard Antimicrobial Agent.
- CycleSaver® technology includes a double-sided evaporator, uniquely crafted in stainless steel, which produces ice on both sides, resulting in more ice in less amount of time.
- EverCheck Control board with audible alarm and diagnostic features, designed to assist services technicians in diagnosing problems.
- Durable stainless-steel exterior.
- Easily removable & cleanable air filters on front panel.
- Ice storage bin, top kit and water filter sold separately



TECHNICAL DRAWING



PRODUCT SPECIFICATION

Production Capacity / 24hrs	Approx. 255kg @ 21°C Air temp; 15°C Water Approx. 221kg @ 32°C Air temp; 21°C Water
Recommended Storage Bins	-301 SA B-501 SA B-801 SA B-1300 SS B 1500 SS
Freeze Cycle Time	Approx. 26.8 Min (At. 21°C Air ; 15°C Water)
Ice Production/ Cycle	Approx 5.3kg/572 pieces
Dimensions	560mm (W) x 625mm (D) x 610mm (H)
Cooling	Air
Weight Net/Gross (kg)	57/73
Refrigeration System	Forced air circulation
Refrigerant Charge	R404a / 780g
AC Supply Voltage	1 PHASE 220-240V 50Hz/ 10 AMP Plug
Amperage	Running: 54.9A Starting: 24A
Operating Conditions:	
Ambient Temp	7-40°C
Water Supply Temp	7-35°C
Water Supply Pressure	0.07-0.8MPa (0.7-8bar)
Voltage Range	±6%
Electrical Consumption	984W (at 32°C, WT 21°C)
Water Consumption / 24hrs	Approx. 0.55m³/d (AT 21°C, WT 15°C)

INSTALLATION REQUIREMENTS

- Ensure the condenser is cleaned periodically as per the manufacturer’s manual.
- Do not plug the unit into multi-plug power boards with other appliances
- Room ventilation or air conditioning can improve the situation by reducing the humidity.
- Hoshizaki recommends the use of a compatible water filter to prevent non-warrantable scale & sediment complications.

*Refer to manual for full installation & maintenance requirements.



For free 6 month extended warranty, register online within 4 weeks of purchase date.
hoshizaki.com.au

